

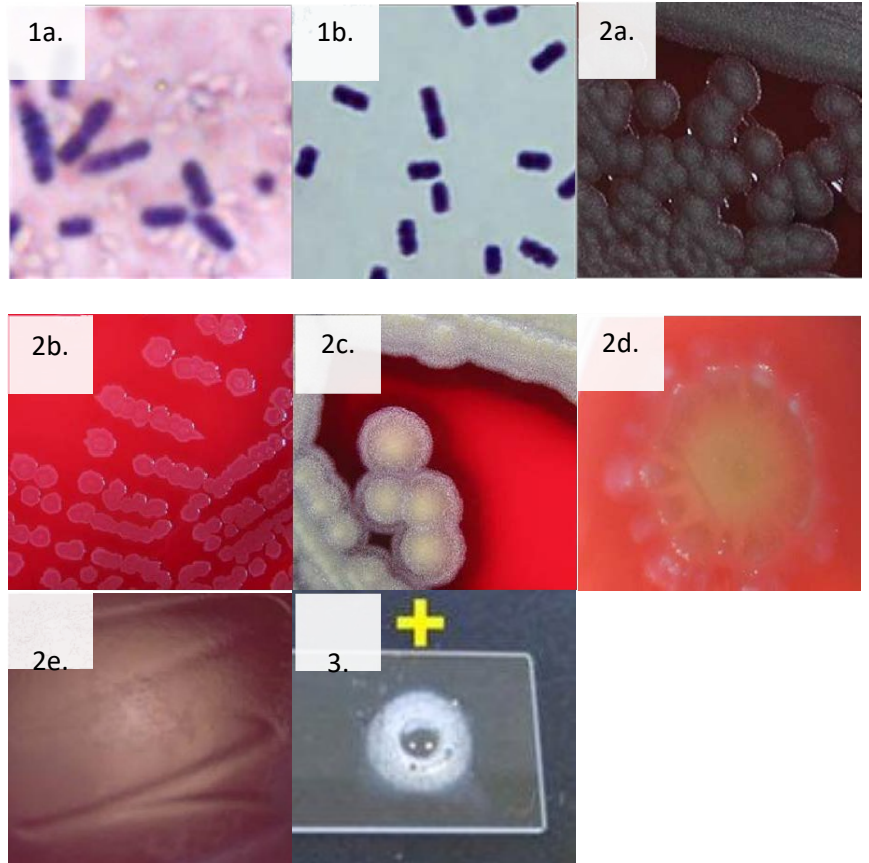
# Bacillus spp. ID Chart

## Summary

Major pathogen: *Bacillus anthracis*. Other species only in immunocompromised patients and usually isolated from several blood cultures

### Characteristics of *Bacillus* spp.

1. a and b- Regular large Gram positive rods and spores (do not stain)
2. a – hemolytic, b - non-hemolytic, c – ground glass, d – large spreading, e – no growth on MacConkey
3. Catalase (+)



### *Bacillus anthracis*

#### Possible *Bacillus anthracis*

- Very fast growing
- Non-motile

1. a- Medusa head or comma shaped colonies and non-hemolytic  
b- Colony sticks together (tenacious colonies)
2. *B. anthracis* from broth – central spores “string of pearls”

