



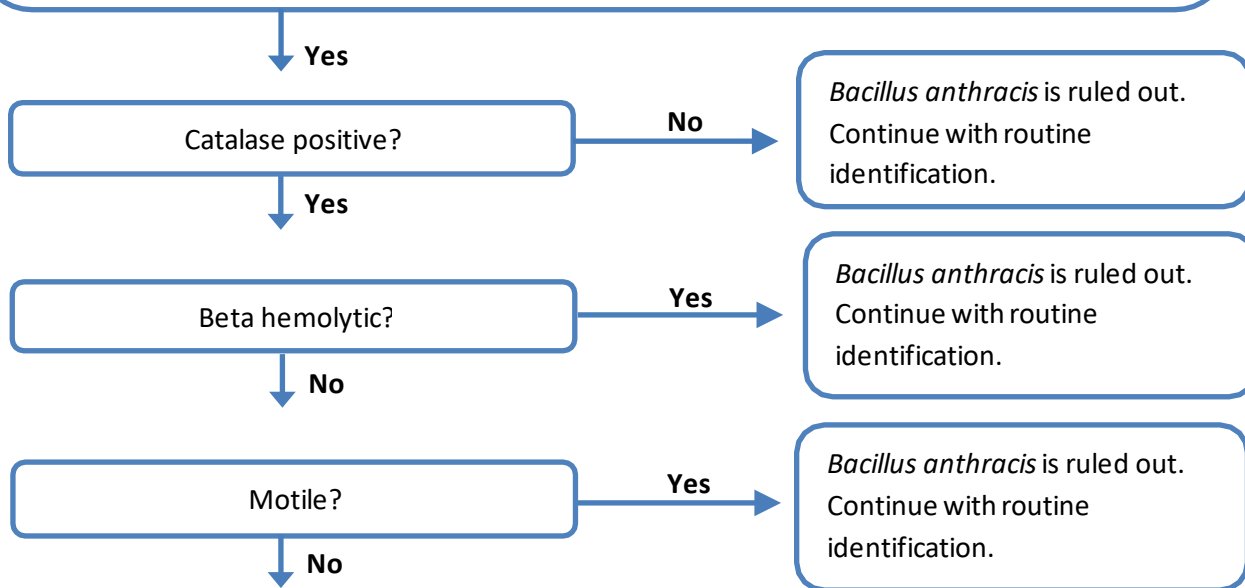
Bacillus anthracis Identification Flowchart

Major characteristics of *Bacillus anthracis*:

Gram stain morphology: Large, Gram-positive rods. Spores may be found in cultures grown in 5% CO₂ but not usually in clinical samples

Colony morphology: Ground glass appearance, no hemolysis or pigment on BAP

Perform all work in a biosafety cabinet using BSL-3 precautions.



Bacillus anthracis is not ruled out.
Call the LRN Reference Level Laboratory and send suspected agent.
Report: Possible *Bacillus anthracis* submitted to LRN Reference Laboratory.