

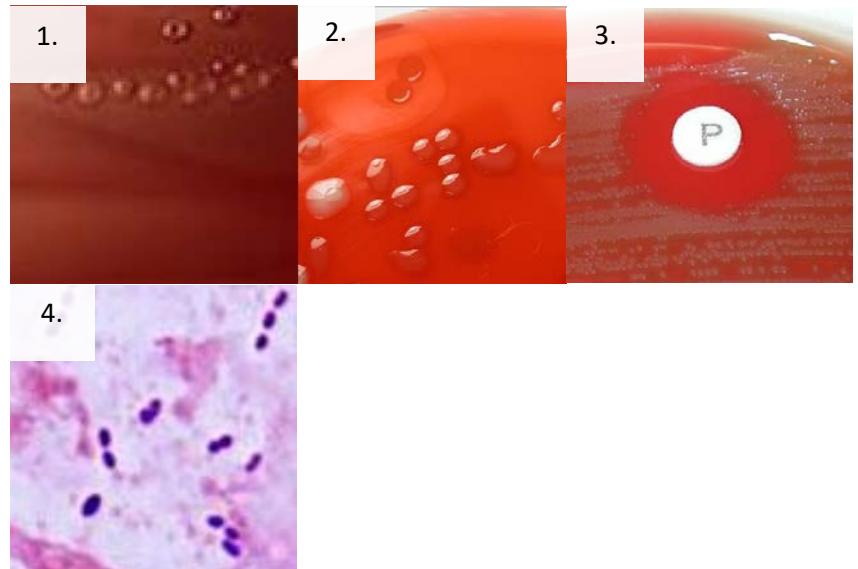
Alpha Streptococci vs Streptococcus pneumoniae ID Chart

Summary

Alpha-hemolytic Streptococci (green color) on blood agar; do not grow on MacConkey; catalase negative

Streptococcus pneumoniae Characteristics

1. Colonies more mucoid and may have concave centers.
2. Dissolve in 10 min with bile (sodium desoxycholate)
3. Optochin (P) disk sensitive (zone).
4. Gram positive cocci in pairs. May be lancet shaped.



Viridans Streptococci Characteristics

1. Pathogens are only in blood cultures.
2. Colonies are smaller and drier.
3. No zone around Optochin (P) disk.
4. Will not dissolve with bile.

